



CURRENT ISSUE

From the Archives

Recent Additions

- Accessories
- Buyer's Guides
- Digital Cameras
- Digital Peripherals
- Film
- Film Cameras
- Lenses
- Monthly Contest
- Photo Techniques
- Point and Shoot
- Travel Photography

Site Features

- ▶ Photo Links
- ▶ Vote
- ▶ Previous Votes
- ▶ Previous News
- ▶ Classifieds
- ▶ Photo Store

Past Issues

2003

Jan	Feb	Mar
Apr	May	June
July	Aug	Sept
Oct	Nov	Dec

2002

Jan	Feb	Mar
Apr	May	June
July	Aug	Sept
Oct	Nov	Dec

Photo Offers

- ▶ Digital Photo Printing
- ▶ Digital Photo Camera
- ▶ Digital Imaging
- ▶ Kodak DC4800
- ▶ Zoom Camera

PETERSEN'S
PHOTO graphic



Home/News Subscribe Give a Gift Subscriber Services Photo Store

From the Archives

Corel Bryce 5

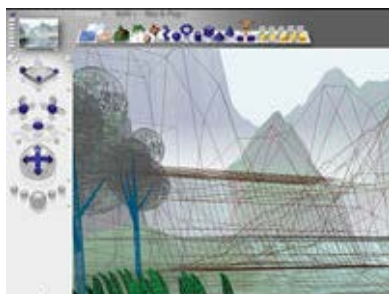
Text and Photos by Jack and Sue Drafafl, February, 2002



Create 3D worlds from your 2D photos

Once a camera shutter is pressed, a moment in time is captured on a flat, two-dimensional piece of film. When you view the resulting photographic image, you can only see what the camera lens projected onto the film or digital camera CCD chip. You can load the image into your computer and try some editing tricks, but creative manipulation is limited to whatever was

captured in time. Or is it? Bryce 5, from Corel Corporation, takes image manipulation to another level by combining the power of 3D editing with real-world 2D images.



Icons on left are for navigation, and icons on top are to create, edit, and manipulate 3D objects. Nano preview is in upper left.

To fully realize the potential of a 3D program, you first need to understand 2D. Two-dimensional programs use an x and y axis which yields an image that is flat, and lacks depth. Although many of the more powerful 2D programs give the appearance of 3D, in reality, they are still x y programs. Bryce goes a step or two further to give you two additional dimensions.



The skylab is used to create and adjust the components of the sky. The sun, moon, clouds, rainbows, stars, and comets can all be added and adjusted.

The third dimension is the z axis, which provides the 3D effect. Each object can be rotated, scaled, stretched, or moved within the scene. You can also construct objects from scratch by loading in basic shapes such as circles, cubes or cones and mixing them together to make some very complex and unique objects. It is even possible to coat the objects with hundreds of realistic materials such as metal, plastic, water, rock and mountain terrain.

The fourth dimension is time itself. Objects in a scene can now be moved along a timeline, or moved within the scene to create the passage of time.

Magazine

Article Index

- Page 1
- Page 2

Digital Camera HQ: See prices and reviews of digital cameras.





Image created with multiple spheres and material coating of eyes.



Spheres were coated with maps of earth and moon, and placed in scene with sun and stars.

You can move the camera along a path, move objects in the scene, or migrate the sun across the sky to achieve time travel. Wow!

When you first look at the Bryce editing screen, it looks pretty simple with just a few icons at the top and sides. What you don't realize is that the program is full of very powerful and sophisticated layered menus that allow you to create just about any type of photo you can imagine. We couldn't even begin to cover all the features here, so we'll look at groups of features and their general applications.

The Create menu allows you to import a wide variety of 3D objects like water, clouds, mountains, trees, rocks, 3D objects created in other programs, as well as your 2D photographic images. This new version 5 features the Tree Lab for creating trees and controlling trunk size, frequency of branches or foliage. Also new to Bryce are Meatballs, or spheres that blend into each other to form innovative new shapes.

When each object is imported, it is represented by a wireframe image. If you want to see what it will look like in the final state, you simply render the image. You can also toggle the preview so that you can see either the wireframe, the rendered image, or both at the same time.

The Editing group of menus allows you to size, rotate, and coat the object with hundreds of different materials. Since you are working in three dimensions, you can move objects left, right, up, down, near or far. The effects are very realistic—glass refracts like glass and water reflects like water. The new Light Lab provides tools for creating realistic lights and shadows. If you have never worked in 3D before, it may take a little practice to get the hang of it, so don't be discouraged.



CURRENT ISSUE

From the Archives

Recent Additions

- Accessories
- Buyer's Guides
- Digital Cameras
- Digital Peripherals
- Film
- Film Cameras
- Lenses
- Monthly Contest
- Photo Techniques
- Point and Shoot
- Travel Photography

Site Features

- ▶ Photo Links
- ▶ Vote
- ▶ Previous Votes
- ▶ Previous News
- ▶ Classifieds
- ▶ Photo Store

Past Issues

2003

- | | | |
|------|-----|------|
| Jan | Feb | Mar |
| Apr | May | June |
| July | Aug | Sept |
| Oct | Nov | Dec |

2002

- | | | |
|------|-----|------|
| Jan | Feb | Mar |
| Apr | May | June |
| July | Aug | Sept |
| Oct | Nov | Dec |

Photo Offers

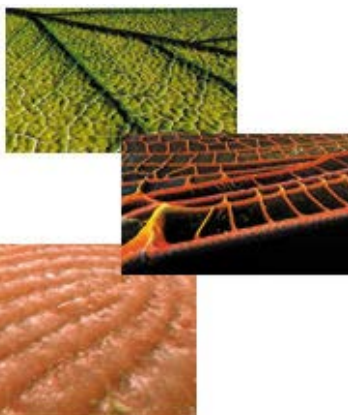
- ▶ Digital Photo Printing
- ▶ Digital Photo Camera
- ▶ Digital Imaging
- ▶ Kodak DC4800
- ▶ Zoom Camera

PETERSEN'S
PHOTO graphic



[Home/News](#) [Subscribe](#) [Give a Gift](#) [Subscriber Services](#) [Photo Store](#)

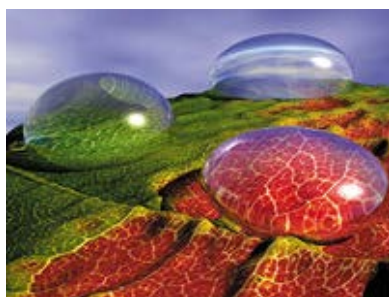
From the Archives



The images above were created by importing 2D images into Bryce. The surface of each object was then converted to 3D using the mountain editor.



Main edit screen in render mode.



2D image of leaf was imported and converted to 3D image using the mountain editor. Dew drops were created from spheres, flattened and changed to water with material editor.

The Sky and Fog menu controls the environment in your scene and has adjustments for the sun, moon, planets, stars, fog, haze, volume lights, wind, or cloud control. There is a tendency to overuse these controls, so make sure you preview the image before you save to file.

The Navigation menus are located on the left side of the editing screen. As you edit, you have a small preview screen which features a very small fully rendered final image. The navigation controls allow you to view a scene from the top, side, front, back, and from the camera's point of view. You can zoom in and out with each view, and even save view positions for later review.

Each object in a scene can be edited directly by selecting the object, and then using a floating toolbox to edit the object. This toolbox allows you to size, rotate, coat, and position each object. You can combine objects to create one single object, or use one to subtract parts from the first. As an example, you can create crystal glassware, break it, and place the broken piece next to the cracked glass.

The Materials menu is one of the most creative aspects of the program. With this menu, you can import 2D pictures and layer them on 3D objects, or use them to create a new 3D object and then coat the object with the material. You can use the material editor to fine-tune preset Bryce materials, or import your own and edit them as new Bryce materials.

Up to now, we have been talking about 3D editing with Bryce. The program has a fourth dimension, or time. Once you have created your 3D scene, you can setup a specific time frame, and move cameras or objects as time passes. The Animation control menus

Magazine

Article Index

[Page 1](#)
[Page 2](#)

[Digital Camera HQ: See prices and reviews of digital cameras.](#)





Book cover created in Bryce was used for Jack and Sue Drafaht's new book Digital Imaging for the Underwater Photographer. CDs and film were imported as 2D objects into scene.

are located at the bottom of the screen, and allow you to move from the beginning to the last frame in the wireframe mode to see the effect. You can even manipulate the position of the sun and clouds as the objects move throughout a scene.

Also new to Bryce 5 is Network Rendering. This allows multiple computers to share the job of rendering the final series of animation images or divide the task of rendering tiles in a single frame. Thanks, Corel, for this fabulous timesaving feature!

The challenge of 3D editing has become very popular so you will find that Bryce has a strong following on the Web—www.brycetek.com. The Bryce ring lists all Bryce sites, features samples, tutorials beyond the manual and even free downloads.

Although the world of 3D editing may seem very complicated at first, Bryce provides plenty of help. There are a series of tutorials on the second CD that provide step-by-step instructions on how to perform some of the more-difficult 3D image manipulations. Bryce 5 is available for Macintosh, Power Macintosh, Mac OS X and Windows 98, Windows 2000, or Windows NT (Service Pack 6 or higher) or Windows Me for \$299 or upgrade for \$149. Check out www.corel.com to learn more about Bryce 5 and other fine software programs from the Corel Corporation.

Your Own Photo On Canvas

You Take It, We Make It. Order Your Canvas Photo Online From \$29.69
www.Canvas4Life.com

The Art Institutes

Get info on one of our Photography classes now. Locations nationwide!
www.The-Art-Institutes.info



View Digital Photos on TV

Zoom, Print, Email from your TV Advanced Wireless Technology
www.x10.com

Digital Photo Printing

4X6: 17¢, 8x10: \$1.88, No Minimum. High Quality Prints on Fuji Paper
www.xpphoto.com

\$0.15 Digital Prints

Total Photo Solutions & Services Great Prices, 24 Hour Service
pephoto.com

Digital Photos From Home

Digital File to Photo Quality Print Upload images, we mail your prints
www.iprintfromhome.com

Digital Photo-Finishing

20"x30" for \$19.95 from your digital files. One stop print shop
www.copyandprint.net

Sponsored Links

- **View Digital Photos on TV**
Zoom, Print, Email from your TV Advanced Wireless Technology
www.x10.com
- **Digital Photo Printing**
4X6: 17¢, 8x10: \$1.88, No Minimum. High Quality Prints on Fuji Paper
www.xpphoto.com
- **\$0.15 Digital Prints**
Total Photo Solutions & Services Great Prices, 24 Hour Service
pephoto.com
- **Digital Photos From Home**
Digital File to Photo Quality Print Upload images, we mail your prints
www.iprintfromhome.com
- **Digital Photo-Finishing**
20"x30" for \$19.95 from your digital files. One stop print shop
www.copyandprint.net



TRIAL ISSUE!

Here's the fastest way to bring home the one magazine for people who love photography -- *Photographic Magazine* -- at no risk! During this special online offer, you can get a **FREE trial issue** and receive 11 more (a total of 12 issues) for only \$9.97 - **you save over \$37 off the cover price!**

If you choose not to subscribe, just write "cancel" on your invoice, send it back and owe nothing. Either way, the trial issue is yours to keep -- without obligation. Just complete the information below, and click on submit.

Outside the US? [Canada](#) or [International](#)

GIVE A GIFT



Email:

First Name:

Last Name:

Address Line 1:

Address Line 2:

City:

State:

Zip:

Select a payment option:

Charge my credit card
Bill me later

[Home/News](#) | [Subscribe](#) | [Give a Gift](#) | [Subscriber Services](#)
[Shutterbug Guide](#) | [Buyer's Guide](#) | [Idiot's Guide](#) | [Big Book](#)
[Media Kit](#) | [Editorial Calendar](#) | [Privacy](#) | [Contact Us](#) | [Classifieds](#)

Copyright © Primedia Magazines, Inc. All rights reserved.